

# MONTHLY MEMBERSHIP PROGRESS REPORT

District 14 C

Results as of: 6/30/2020

GMT:

LOCATION PENNSYLVANIA

GMT CA

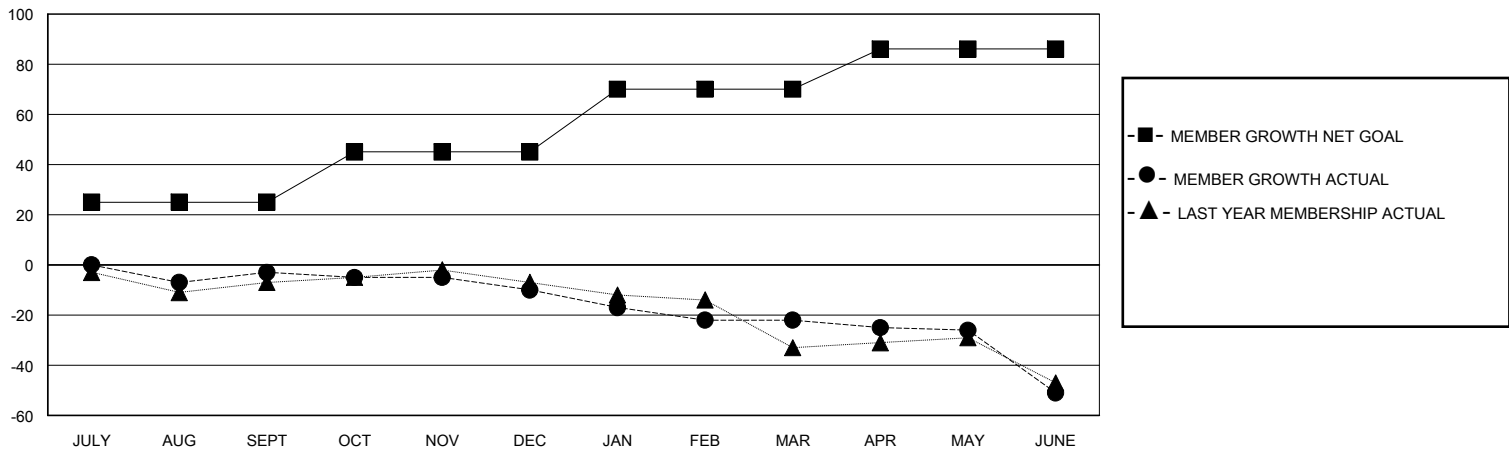
Clubs			
RESULTS FOR 2019-2020			
QUARTER	NEW CLUB GOAL	NEW CLUBS	DROPPED CLUBS
JULY/AUG/SEPT	0	0	0
OCT/NOV/DEC	0	0	0
JAN/FEB/MAR	0	0	0
APR/MAY/JUNE	1	0	0

Members			
RESULTS FOR 2019-2020			
QUARTER	MEMBER GROWTH NET GOAL	MEMBER GROWTH ACTUAL	DROPPED MEMBERS ACTUAL (including transfers)
JULY/AUG/SEPT	25	27	25
OCT/NOV/DEC	20	13	20
JAN/FEB/MAR	25	25	33
APR/MAY/JUNE	16	4	30

GOALS AND ACTUAL NEW CLUBS CUMULATIVE



GOALS AND ACTUAL MEMBERS CUMULATIVE



DROPPED CLUBS: 0	24 CLUBS OF 45 ADDED 1 OR MORE NEW MEMBERS	<b>GENDER DISTRIBUTION</b> MALE 937 (77.82%) FEMALE 267 (22.18%)
<b>DROPPED MEMBERS</b> DECEASED 30 CLUB CANCELLED 0 OTHER 78 TOTAL 108	<a href="#">CLICK HERE FOR CUMULATIVE MEMBERSHIP DATA</a>	TOTAL FAMILY UNIT MEMBERS 207 FAMILY MEMBERS PAYING HALF DUES 106